



**GroupID**

by *Imanami* | NOW PART OF *netwrix*

**Version 10**



GroupID  
**Authenticate**



GroupID  
**Automate**



GroupID  
**Self-Service**



GroupID  
**Synchronize**



GroupID  
**Password Center**



GroupID  
**Insights**



GroupID  
**Mobile App**



GroupID  
**Reports**

# Configuration Guide

## GroupID Password Center Client

This publication applies to GroupID Version 10 and subsequent releases until otherwise indicated in new editions.

© 2022 **Imanami | Now Part of Netwrix**. Trademarks are the property of their respective owners.

# Contents

<b>Chapter 1 - GroupID Password Center Client .....</b>	<b>1</b>
Files in the Download Package.....	1
Setting up a Group Policy Object.....	1
Installing Password Center Client on a client machine.....	9
<b>Chapter 2 - Removing Password Center Client .....</b>	<b>10</b>
<b>Appendix A .....</b>	<b>13</b>
Installing Group Policy Object .....	13

# Chapter 1 - GroupID Password Center Client

GroupID Password Center Utility is a web interface for unlocking user accounts and resetting passwords.

You must install it on each client workstation to make the password reset and account unlock features available to all users. It provides buttons on the Windows logon screen, which route users to the Password Center web portal where they can unlock their accounts and reset their passwords.

---

## Files in the Download Package

The Password Center Client utility files are copied in the following folder during the installation of GroupID:

- C:\Program Files\Imanami\GroupID 10.0\PasswordCenter

The files are:

- PasswordCenterClientSetup32.msi (for 32-bit client workstations)
- PasswordCenterClientSetup64.msi (for 64-bit client workstations)
- ImanamiPasswordCenterClient.adm (Password Center Administrative Template file)

---

## Setting up a Group Policy Object

Instead of installing the utility manually on each individual client workstation, you can distribute it for automatic installation using a Group Policy Object (GPO), for substantial time savings (especially with larger networks). The GPO can be defined for an organizational unit or applied on the entire domain. The utility is installed automatically at the next Windows startup.

### To set up a group policy object:

Make sure the files mentioned above are available on your domain controller. If not, then:

1. Create a new folder and copy the following files to it:
  - **PasswordCenterClientSetup32.msi**, if you want to install Password Center Client on 32-bit client workstations.
  - **PasswordCenterClientSetup64.msi**, if you want to install Password Center Client on 64-bit client workstations.
2. Share the folder with the **Everyone** group with **Read** permission.
3. Launch **Group Policy Management** console by typing gpmc.msc in the **Run** dialog box and clicking **OK**.

Group Policy Management console is available if the Group Policy Management feature has been installed.

You can install this feature using the Server Manager. You can use the Server Manager itself to create and manage group policies once the feature has been installed. See [Appendix A](#) to learn more about installing the Group Policy Management feature.

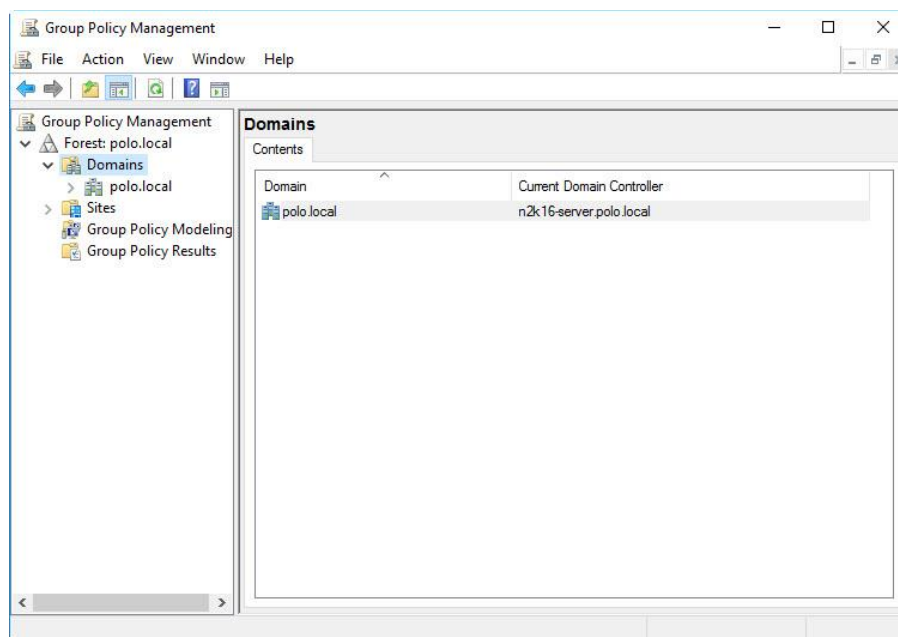


Figure 1: Group Policy Management Console

4. Right-click the domain or organizational unit for the computers that you want the Password Center Client installed on. Select **Create a GPO in this domain and link it here**.

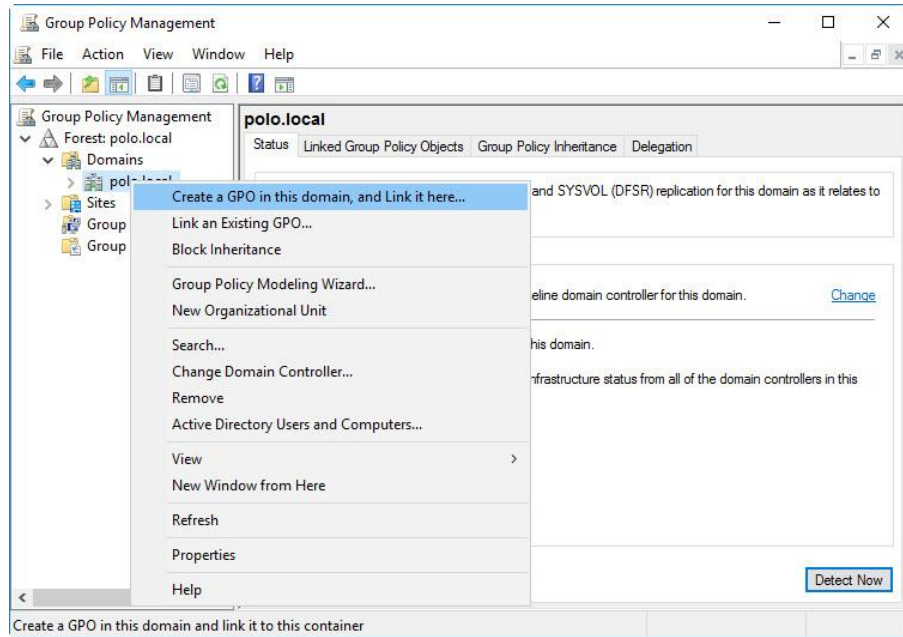


Figure 2: Group Policy Management Console with domain selected

5. The following dialog box is displayed:

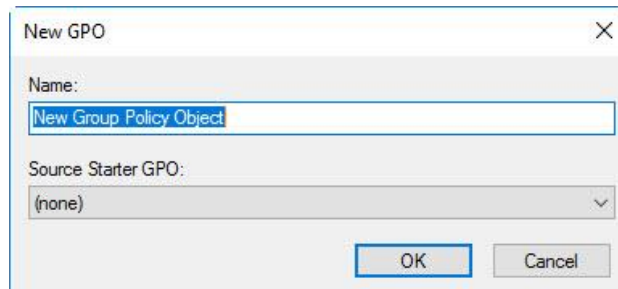


Figure 3: New GPO dialog box

6. Type the name of the new Group Policy Object (GPO) in the **Name** box and click **OK**. The new GPO gets listed under the selected domain or the organizational unit.

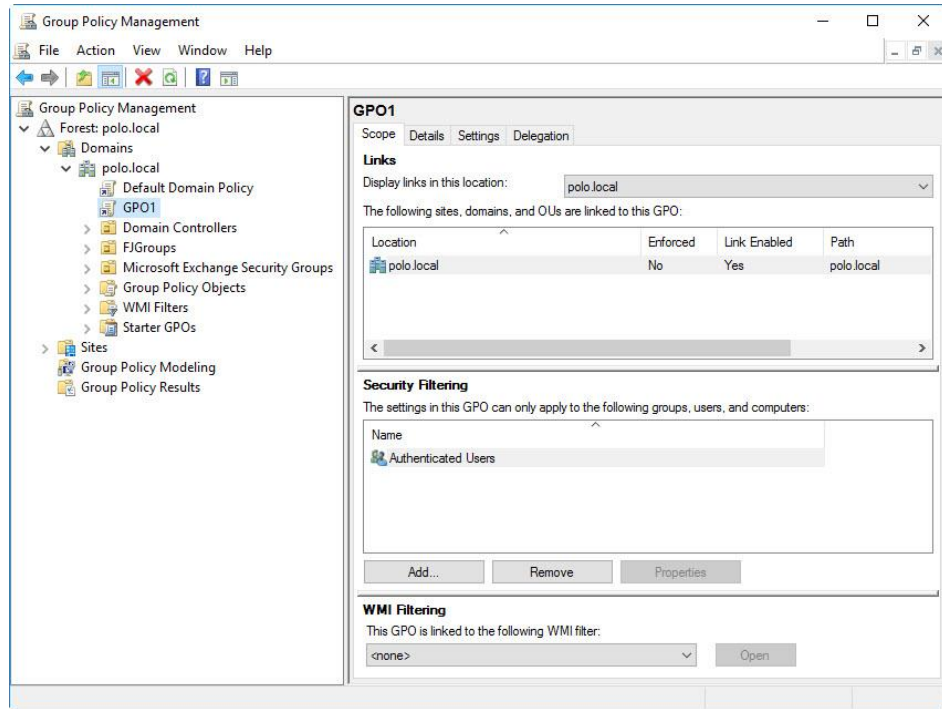


Figure 4: New GPO listed

7. Right click the new GPO and select **Edit**. The **Group Policy Management Editor** opens:

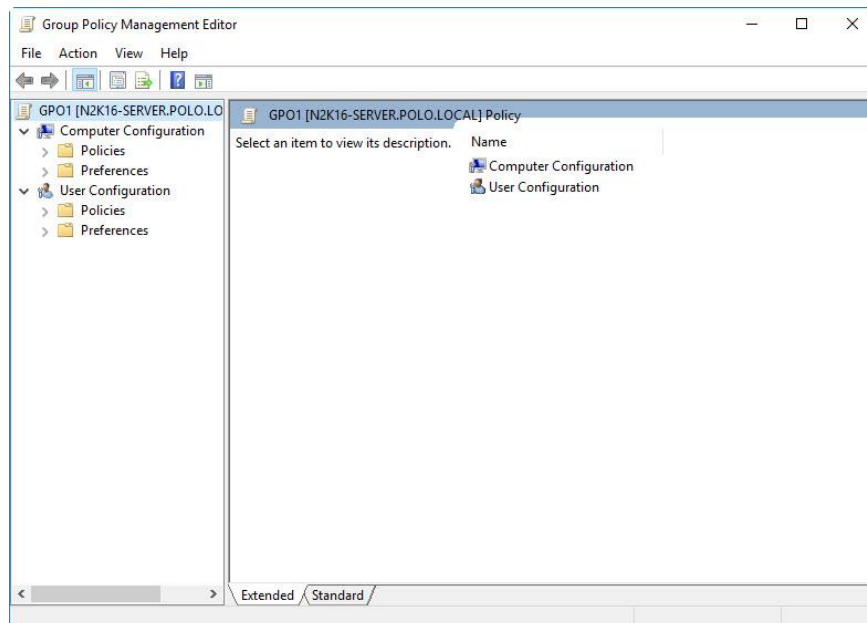


Figure 5: Group Policy Management Editor

8. Click **Computer Configurations > Policies > Software Settings**.
9. Right-click **Software Installation**, select **New > Package**.

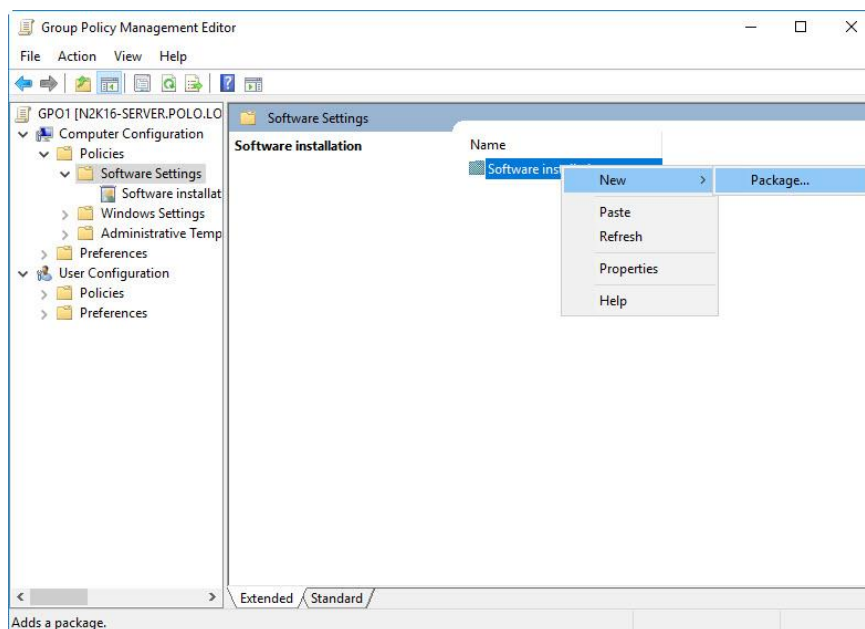


Figure 6: Group Policy Management Editor

Specify the network path to the shared folder you created in step 1 and select one of the following files:

- **PasswordCenterClientSetup32.msi** (for 32-bit client workstations)
- **PasswordCenterClientSetup64.msi** (for 64-bit client workstations).



Make sure that the path you specify is the network path and not the local path.

10. Click **Open**.



11. On the **Deploy Software** dialog box, select **Assigned** and click **OK**.

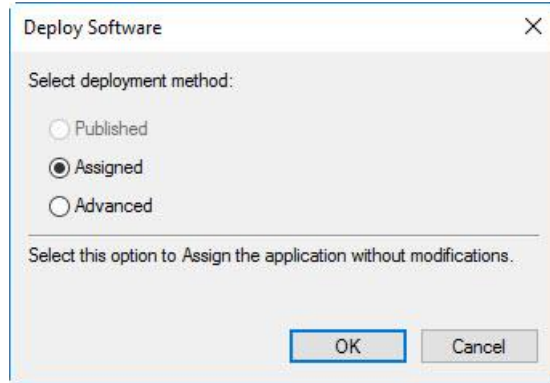


Figure 7: Deploy Software dialog box

The Deploy Software dialog box appears twice if you have selected both msi files.

12. Click the back arrow until you reach the **Computer Configurations** option. Click **Computer Configuration > Policies > Administrative Templates**.
13. Right click **Administrative Templates** and select **Add/Remove Templates**.

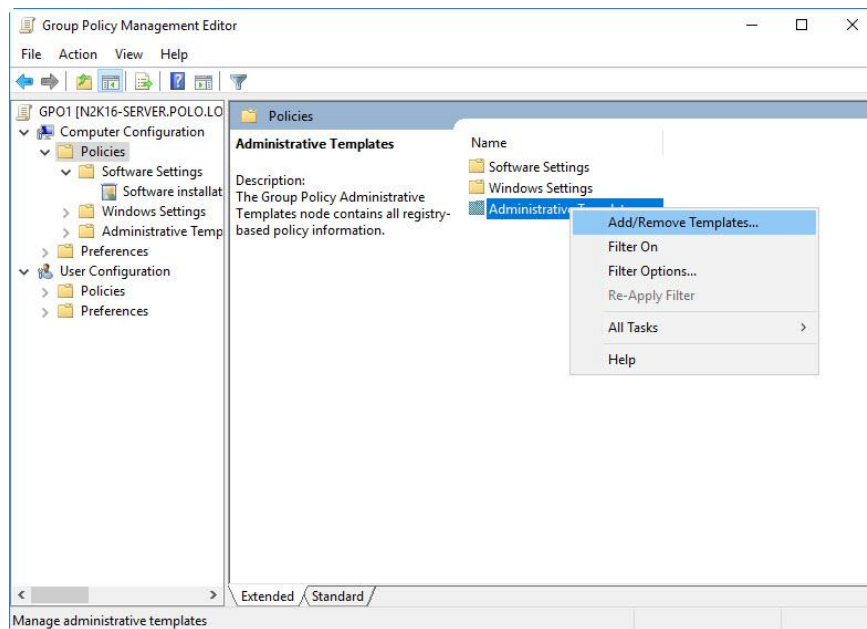


Figure 8: Group Policy Management Editor (*Add Remove Templates option*)

14. On the **Add/Remove Templates** dialog box, click **Add**.

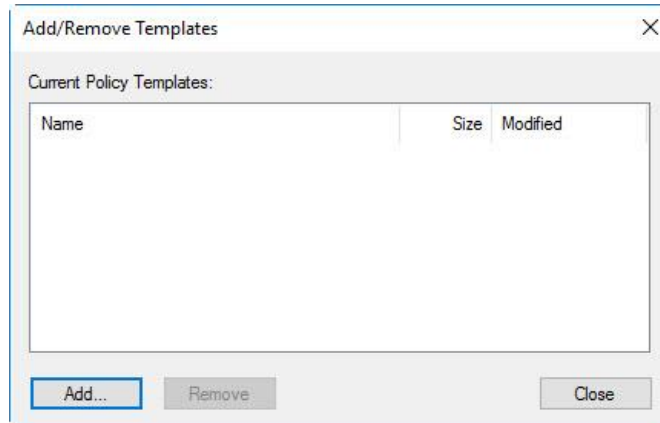


Figure 9: Add/Remove Template dialog box

15. Browse to the location of the Password Center Administrative Template file named **ImanamiPasswordCenterClient.adm** and select it. The GPO uses this file to configure several settings.

The file is listed on the dialog box.

16. Click **Close**.
17. Expand **Administrative Templates > Classic Administrative Templates (ADM)** and click **Imanami Password Center Client**.

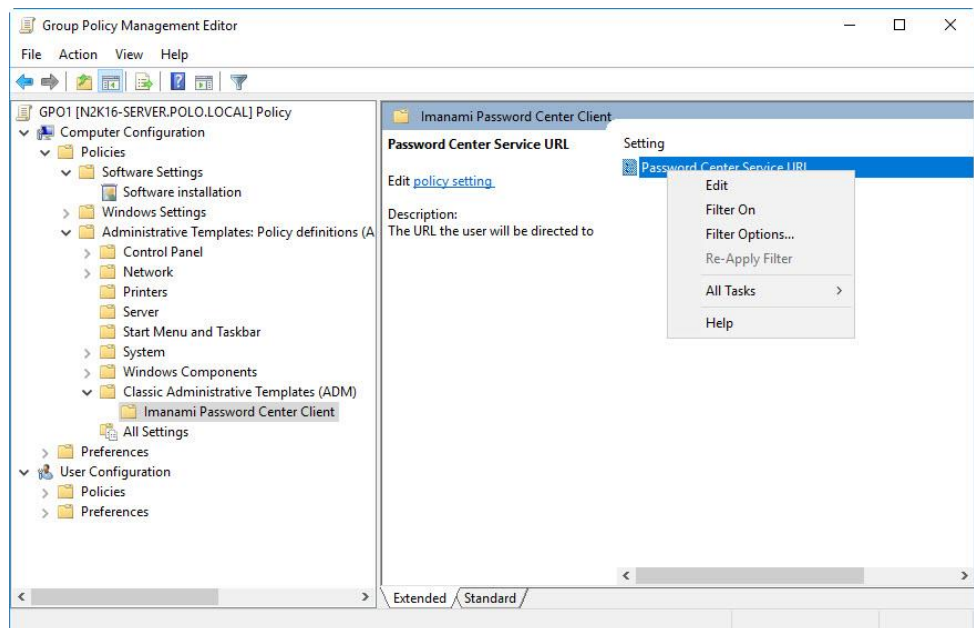


Figure 10: Group Policy Management Editor

18. In the **Setting** column, right-click **Password Center Service URL** and click **Edit**.

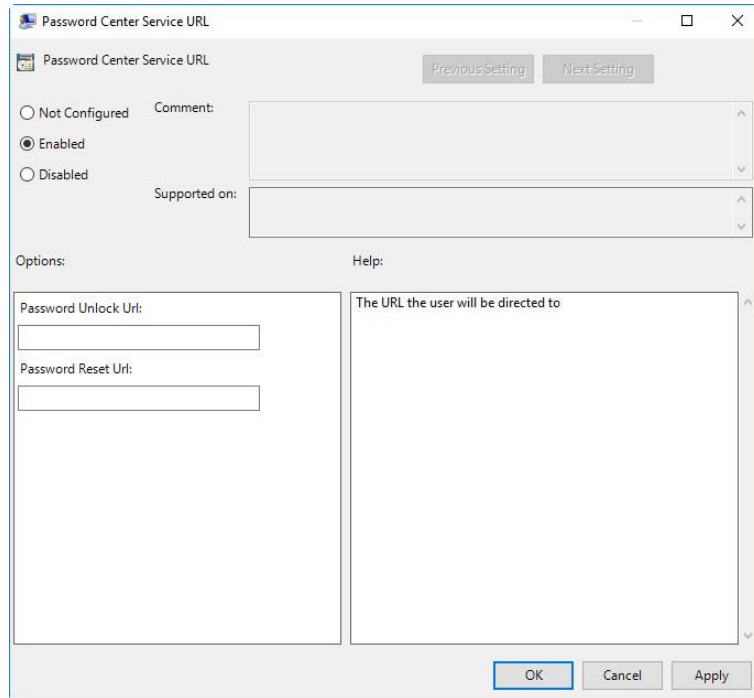


Figure 11: Password Center Service URL dialog box

19. Select the **Enabled** option button.
20. In the **Password Unlock Url** box, type the address of the portal's password unlock page where users are redirected to unlock their accounts.

Example of URL:

`http://machine name/PasswordCenter/User/Unlock`

21. In the **Password Reset Url** box, type the address of the portal's password reset page where users are redirected to reset their passwords.

Example URL:

`http://machine name/PasswordCenter/User/ResetPassword`

22. Click **OK**.

---

## Installing Password Center Client on a client machine

When you have successfully created the GPO, you can install the Password Center Client utility on each workstation, located in the organizational unit or a member of the domain on which the GPO is applied.

Once the utility is installed on the client workstation, users must restart their computers before the **Forgot my password** and **Unlock my account** options appear on the Windows log on screen, as shown below:

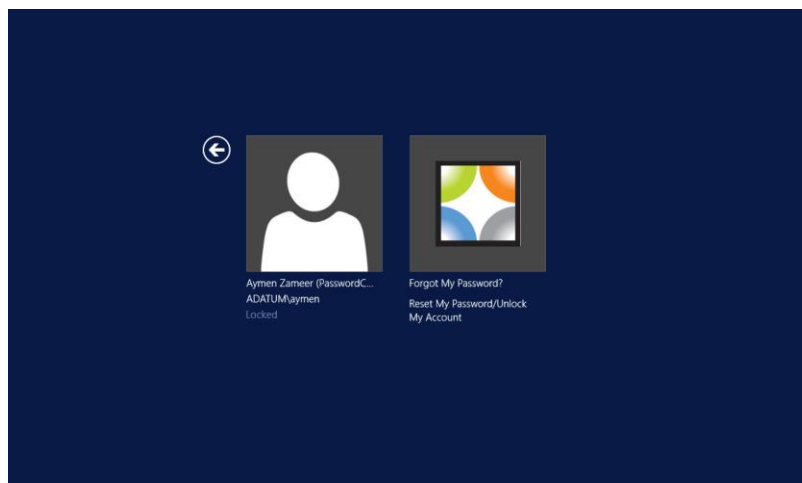


Figure 12: Windows Log on screen with Forgot my password and Unlock my Account options

# Chapter 2 - Removing Password Center Client

To remove the Password Center Client utility from all workstations, you must delete its installation package from the GPO.

## To remove Password Center Client:

1. Open **Group Policy Management**.
2. Right-click the required GPO under the domain or organizational unit that contains the GPO distributing Password Center Client and click **Edit**. The **Group Policy Management Editor** opens.
3. Click **Computer Configurations > Policies > Software Settings > Software Installation**.
4. Right-click the Password Center Client package, point to **All Tasks** and click **Remove**.

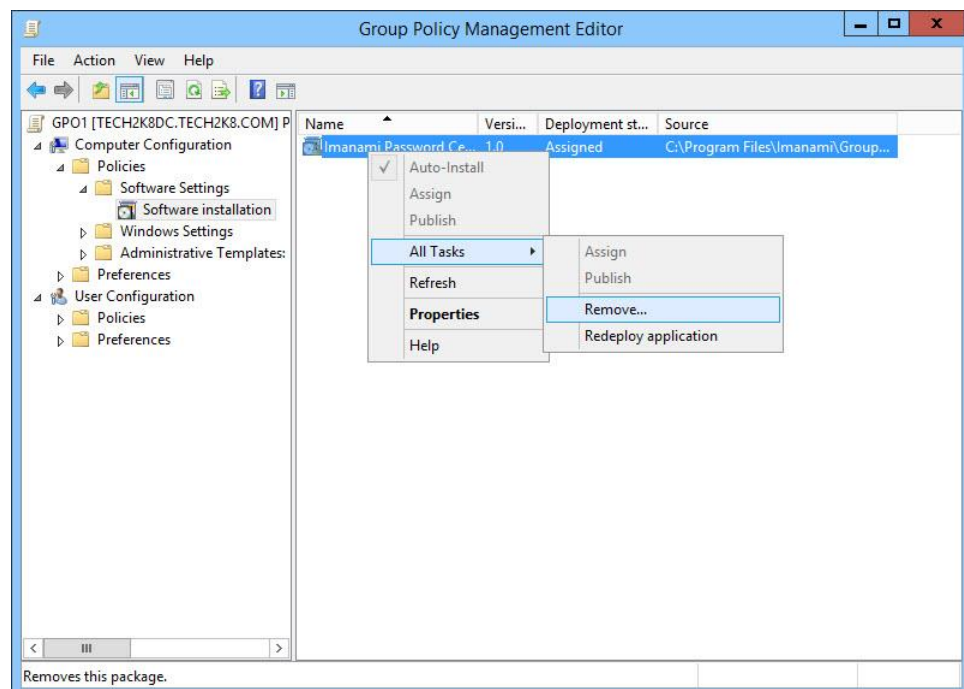
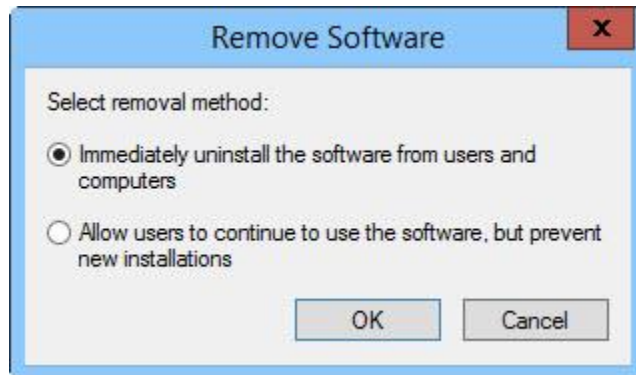


Figure 13: Group Policy Management Editor

5. In the Remove Software dialog box, select **Immediately uninstall the software from users and computers** and click **OK**.



6. Click the back arrow until you reach **Computer Configurations**. Click **Computer Configurations > Policies**. Right-click **Administrative Templates** and select **Add/Remove Templates**.

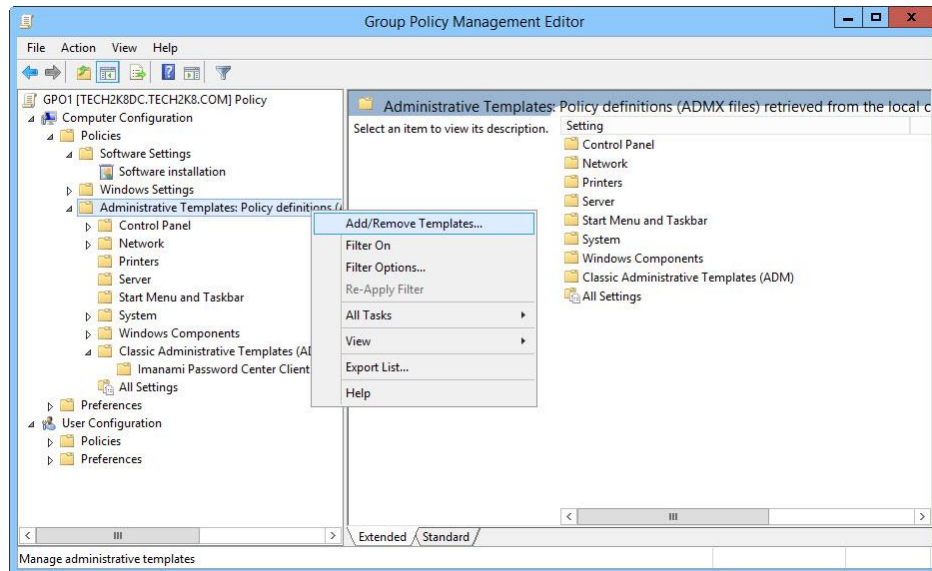


Figure 14: Group Policy Management Editor

7. On the **Add/Remove Templates** dialog box, select **ImanamiPasswordCenterClient**, click **Remove** and then click **Close**.

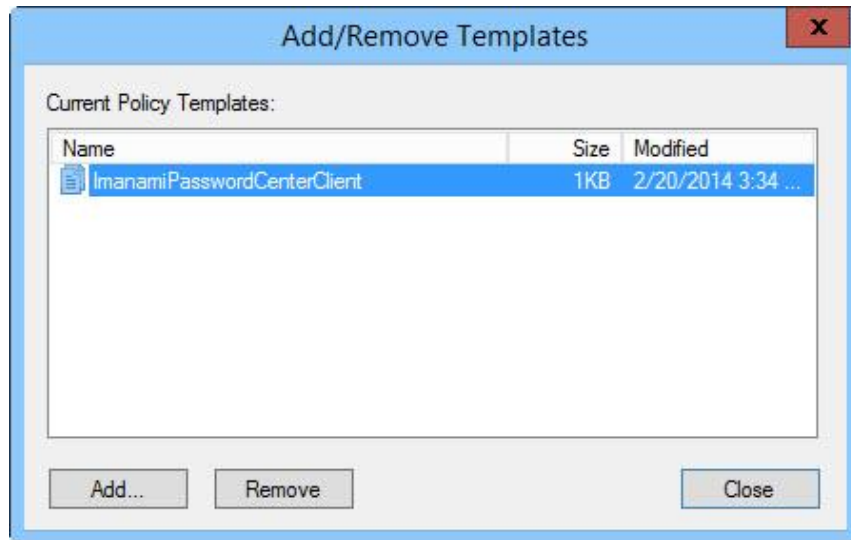


Figure 15: Add/Remove Templates dialog box

8. Click **Close** to close the Group Policy Object Editor.
9. When a client workstation restarts, the GPO, now without the client object, is applied on it. This removes the installed Password Center Client utility from all client workstations. Once the utility is removed from the client workstation, the user must restart it again to remove the buttons from the Windows logon screen.

# Appendix A

---

## Installing Group Policy Object

### Windows Server 2008 R2:

1. Launch Server Manager from Administrative Tools and click the **Features** node.
2. Click **Add Features** to launch the **Add Features** wizard.
3. On the **Select Features** page of the wizard, select **Group Policy Management** from the list and click **Next**.
4. On the **Confirm Installation Selections** page, click **Install**.

### Windows Servers 2012 & 2016:

1. Launch Server Manager from Administrative Tools.
2. Click the **Add Roles and Features** node.
3. Click **Next** until you reach the **Features** page.
4. Select the **Group Policy Management** check box and click **Next**.
5. On the **Confirmation** page, click **Install**. The **Result** page displays the progress of the feature installation.
6. Click **Close** when installation is complete.





# GroupID

by *imanami* | NOW PART OF **netwrix**

## **Imanami | Now part of Netwrix**

6160 Warren Parkway, Suite 100,  
Frisco, TX 75034,  
United States.

<https://www.imanami.com/>

Support: (925) 371-3000, Opt. 3  
[support@imanami.com](mailto:support@imanami.com)

Sales: (925) 371-3000, Opt. 1  
[sales@imanami.com](mailto:sales@imanami.com)

Toll-Free: (800) 684-8515

Phone: (925) 371-3000

Fax: (925) 371-3001